



PINSETTER PARTS FOR GS[®] MACHINES

GS[®] Pinsetter Series: GS-10, 92, 96, 98 & GSX



**STRIKE
MAKER**

2020-21





The Strike Maker brand was introduced in 1999 and has been a major supplier of parts that fit GS® pinsetting machines in the German market as well as surrounding areas of Europe. The partnership between Kegel and Strike Maker will help to bring this proven line of German engineered parts to the United States.



Kegel has always been a brand that focuses on quality products and innovative solutions for our customers; the Strike Maker team shares this vision.

High Quality German Engineering Competitive Pricing Backed by a Two-Year Warranty

Contents

BALL LIFT	3
ELEVATOR	3
TRANSPORT BAND.....	4
BALL CUSHION & PIT CURTAIN.....	5
SWEEP WAGON	5
ACCELERATOR.....	6
SETTING TABLE	7
SPECIAL PARTS + TOOLS.....	9
DRIVE FRAME ASSEMBLIES	10
MAIN FRAME	11
DISTRIBUTOR	11
ELECTRONICS	13
HARDWARE.....	13
DISTRIBUTORS	14

BALL LIFT



SM-53-520171-000
Rubber Track



SM-53-520172-000
Leather Track



SM-53-861057-000
Reset Switch and Bracket
Assembly



SM-90-520060-000
Urethane Ball Wheel Assembly



SM-53-400002-000
Left Hand Exit Track



SM-53-400003-000
Right Hand Exit Track

ELEVATOR



SM-47-014918-003
Pin Count Switch



SM-11-053905-000
V-Belt
(10 mm x 6 mm x 1900 mm)



SM-47-011047-004
Large Nylon Track Wheel



SM-47-013871-004
Master Link with Pin



SM-47-022410-003
Round Belt Pulley



SM-47-013951-003
Wedge Guide



SM-47-013956-003
V-Belt Pulley



SM-47-014009-004
Spacer



SM-47-243027-004
Switch Assembly - Silver Box



SM-47-014054-003
V-Belt Pulley Adapter



SM-47-014060-003
Ejector



SM-47-014800-004
Rubber Bumper



SM-47-013991-001
R.H. Front Pin Deflector



SM-47-013992-001
L.H. Front Pin Deflector



SM-47-013993-001
R.H. Rear Pin Deflector



SM-47-013994-001
L.H. Rear Pin Deflector

TRANSPORT BAND



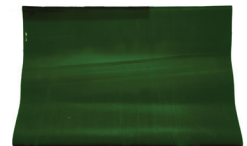
SM-11-053909-000
V-Belt (10 mm x 6 mm x 2560 mm use with 110 mm pulley)



SM-11-053910-000
V-Belt (10 mm x 6 mm x 2650 mm use with 125 mm pulley)



SM-11-635201-000
Transport Band Carpet Heavy Duty Short Pit



SM-11-635201-100
Transport Band Carpet Standard Short Pit



SM-47-020908-003
End Cap with Bearing (2 Stud Front Roller Only)



SM-47-024004-003
V-Belt Pulley



SM-47-024094-003
Housing



SM-47-024309-004
Compression Spring



SM-47-024330-004
V-Belt Pulley 110 mm



SM-47-024735-009
T-Band Frame Assembly (R.H.)



SM-47-024736-009
T-Band Frame Assembly (L.H.)



SM-47-024838-004
Polycord (15 mm) - 1.60 m Welded



SM-47-025049-004
V-Belt Pulley 125 mm



SM-47-092415-003
Drive Pulley Assembly

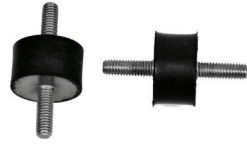


SM-47-024007-003
Pivot Arm

BALL CUSHION & PIT CURTAIN



SM-11-053578-000
Motor Mount (8 mm)



SM-11-053587-000
Rubber Bumper
(25 mm x 15 mm)



SM-11-053588-000
Rubber Bumper
(30 mm x 20 mm)



SM-11-603301-000
Overflow Chute Clamp



SM-47-021010-003
Black Impact Strip



SM-47-021084-004
Pit Curtain



SM-47-022531-000
Heavy Duty Overflow Sock



SM-47-023660-004
Cap (Ball Cushion Assembly)



SM-99-010108-004
Bearing



SM-99-020402-002
Alternate # SM-99-026121-000
Ball Cushion Shock (Hydraulic)

SWEEP WAGON



SM-47-041721-002
Gutter Adapter



SM-47-041783-003
Tipper



SM-47-044927-003
Sweep Board



SM-99-040151-004
Connector Joint



SM-99-010103-004
Plastic Bearing



SM-99-040249-004
Plastic Roller with Bushing



SM-99-040400-002
Alternate # SM-99-046122-000
Sweep Shock Assembly (Hydraulic)



SM-47-044979-004
Rubber Bumper (Sweep)

ACCELERATOR



SM-10-635127-000

Flat Belt



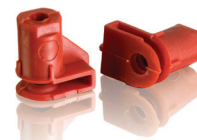
SM-11-053904-000

V-Belt
(10 mm x 6 mm x 950 mm)



SM-11-053907-000

V-Belt
(10 mm x 6 mm x 925 mm)



SM-11-055800-000

Ejot-Plastic Nuts 3.5 mm



SM-47-031054-002

Ball Door



SM-47-031055-003

Ball Door Key R.H.



SM-47-031056-003

Ball Door Key L.H.



SM-47-031454-002

Pivoting Lever



SM-47-031797-002

Locking Bolt



SM-47-031822-004

Lever-Ball Door Stop



SM-47-034767-004

Tension Spring - Ball Door
(Package of 10)



SM-47-034842-004

Bushing

SETTING TABLE



SM-47-011053-004
Chain Gear



SM-47-071449-604
Pinion Gear - Iron



SM-47-050308-004
Damper Only (Pin Holder)



SM-47-050365-003
Toothed Rack (6 mm x 25 mm)



SM-47-051616-004
Gear



SM-47-051632-004
Gear



SM-47-093547-004
Gear



SM-47-052020-004
Gear



SM-47-052240-004
Tension Spring



SM-47-051758-600
Urethane Spotting Tong
Damper (Package of 10)



SM-47-051762-004
Connecting Link
(Spotting Tong Assembly)



SM-47-051635-001
Geared Rack



SM-47-052124-004
Counter Weight



SM-47-053635-004
Cherry Switch - Silver Box GS92



SM-47-054298-001
Pin Detector Plate



SM-47-054689-009
Pin Holder w/ Dampers



SM-47-051634-004
Holder



SM-46-050305-004
Bearing



SM-99-090349-004
O-Ring for Plunger
(Package of 10)



SM-47-054700-004
Double Microswitch
(Pin Holder Assembly)



SM-47-055314-009
GSX Pin Holder Assembly
Complete



SM-47-054980-201
GSX Pin Holder w/ Dampers



SM-47-054981-002
Pin Gripper (GSX Pin Holder)



SM-47-054982-002
GSX Switch Finger



SM-47-054983-002
GSX Drive



SM-47-054984-004
Gear



SM-47-054985-001
GSX Switch Lever



SM-47-054986-004
GSX Grip Ring



SM-47-054987-004
Solenoid Spring (GSX Pin
Holder)



SM-47-054988-003
GSX Switch Button



SM-47-054989-001
Lever



SM-47-054990-001
Lever



SM-47-054991-001
Lever



SM-47-054992-002
Lever



SM-47-054993-001
Lever



SM-47-054997-003
Pin



SM-47-055001-004
GSX Microswitch Clip



SM-47-055002-002
Link Assembly (GSX)



SM-47-055004-004
GSX Solenoid Plunger



SM-47-055005-004
Tension Spring (GSX Pin
Holder)



SM-47-055006-004
GSX Torsion Spring



SM-47-055008-004
GSX Tension Spring



SM-47-860005-000
Pivot Pin (Package of 10)



SM-47-055148-002
Tong (L.H.)



SM-47-054896-001
Tong (R.H.)



SM-47-055320-003
Wedge (Large)



SM-47-055319-003
Wedge (Small)



SM-47-055118-009
Spotting Tong Assembly
2,3,7,8,9,10



SM-47-055117-009
Spotting Tong Assembly 1,4,5,6



SM-47-055323-000
GSX Microswitch only



SM-47-055323-004
GSX Microswitch



SM-47-071615-004
Square Shaft Gear



SM-47-071871-003
T-Stop (Table Rack and Roller
Assembly)



SM-47-075474-004
Table Chain Gear Assembly



SM-47-075553-003
Lower Chain Gear w/ Bearing
Block



SM-47-024839-002
Rear Distributor Shaft Drive
Pulley



SM-47-070401-004
Threaded Cap

SPECIAL PARTS + TOOLS



SM-TOOL-002
Belt Welding Iron (120 VAC)



SM-TOOL-005
Belt Welding Clamp

DRIVE FRAME ASSEMBLIES



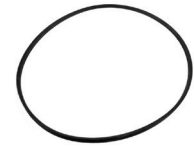
SM-47-075352-004
Pivot Bearing



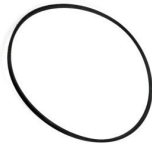
SM-47-243028-004
Microswitch (Silver Box, Consolidated and Nexgen Electronic Box)



SM-47-243029-004
Reed Switch Assembly (Silver Box, Consolidated and Nexgen Electronic Box)



SM-11-053901-000
V-Belt
(10 mm x 6 mm x 875 mm)



SM-11-053902-000
V-Belt (10 mm x 6 mm x 1150 mm or 1160 mm)



SM-47-051674-004
Latch



SM-47-070990-003
Double Pulley



SM-47-071343-004
Clevis



SM-99-070398-004
Rubber Bumper



SM-47-071449-604-P
Plastic Pinion Gear



SM-47-071702-003
Gear Assembly w/ Hub



SM-47-071705-004
Pinion Shaft



SM-47-071823-004
Sprocket Shaft



SM-47-071879-003
Cam



SM-47-071880-004
Spindle Gear



SM-47-071881-004
Square Shaft Drive Gear



SM-99-070395-002
Alternate # SM-99-076123-000
Shock Absorber (Setting Table)



SM-47-075356-003
Crank



SM-47-075357-003
Crank Arm

MAIN FRAME



SM-47-090555-003
Spur Gear (Position 1 and 2)



SM-47-093629-003
Spur Gear (Position 3)

DISTRIBUTOR



SM-11-053579-000
Rubber Mount (Shark)



SM-11-053903-000
V-Belt (8 mm x 13 mm x 1375 mm)



SM-11-680301-000
Molex[®] Terminal Female
(Package of 10)



SM-11-680302-000
Molex[®] Terminal Male
(Package of 10)



SM-47-024839-002
Rear Distributor Shaft Drive
Pulley



SM-47-090577-004
Torsion Spring Right Hand
(Pin 2, 4, 6, 8, 10)



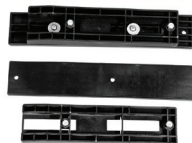
SM-47-090578-004
Torsion Spring Left Hand
(Pin 1, 3, 5, 7, 9)



SM-47-090969-003
Pin Stop



SM-47-091277-002
Slider Mount



SM-47-091284-002
Slider Assembly Complete



SM-47-093587-004
Dowel Pin (3 mm x 15 mm)



SM-47-093863-003
Round Belt Pulley



SM-47-094778-001
Pin Station Housing



SM-47-094779-001
Retaining Bow with Flap



SM-47-094780-001
Retaining Bow without Flap



SM-47-094782-003
Release Button



SM-47-093910-003
Shark Rail - R.H. Extension Rail



SM-47-093911-003
Shark Rail - L.H. Extension Rail



SM-47-095103-001
Guide (L.H.)



SM-47-095104-001
Guide (R.H.)



SM-47-094783-002
Ejector Flap (L.H.)



SM-47-094784-002
Ejector Flap (R.H.)



SM-47-094785-002
Cam Assembly (L.H. - Pin
Stations 1, 5, 6)



SM-47-094786-002
Cam Assembly (R.H. - Pin
Stations 2, 3, 4, 8, 9)



SM-47-094787-001
Ejector Actuating Lever



SM-47-094789-003
Retaining Pin (Universal Pin
Station)



SM-47-094790-009 w/ Bushing
SM-47-094790-003 w/o Bushing
Square Spindle



SM-47-094791-004
Ejector Tension Spring
(Pin Station)



SM-47-094792-009
Universal Pin Station
(2, 3, 4, 8, 9)



SM-47-094793-009
Universal Pin Station (1, 5, 6)



SM-47-094794-009
Universal Pin Station (7, 10)



SM-47-095105-003
Slide (Smart Shark)



SM-47-095106-001
Fin Switch



SM-47-095154-009
Release Lever (Universal)



SM-47-095742-004
Bushing for Square Spindle



SM-47-274669-004
2 Piece Rear Distributor Gear



SM-47-862931-000
Retaining Bow Extender Sleeve
(Package of 6)



SM-47-091890-002
Distributor Station
(2, 3, 8, 9, 10 Pin) Steel



SM-47-093760-002
Distributor Station (7 Pin) Steel

ELECTRONICS



SM-47-243069-004
Setting Table Cable Assembly



SM-47-244922-004
Setting Table Cable
(Consolidated Upper)



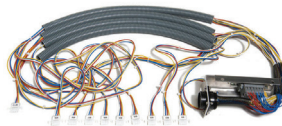
SM-47-245420-004
Setting Table Cable Assembly
(GSX Upper)



SM-99-087140-000
Ball Detector Assembly



SM-99-060387-004
Solenoid only (Consolidated
and Nexgen only)



SM-47-245164-001
Setting Table Harness



SM-99-060242-004
Solenoid - Silver Box



SM-99-060351-004
GSX Solenoid Complete



SM-99-070356-004
Solenoid - Complete

HARDWARE



- SM-11-051851-001** Retaining Ring (12mm) Elevator
- SM-11-051852-001** Retaining Ring (17mm) Elevator
- SM-11-051853-001** Retaining Ring (20mm) Transport Band
- SM-11-051854-001** Retaining Ring (8mm) Square Shaft
- SM-11-051855-001** Retaining Ring (10mm) Setting Table
- SM-11-051856-001** Retaining Ring (25mm) Table Gear
- SM-11-051857-001** Retaining Ring (14mm)
- SM-11-051861-000** External Metric Retaining Ring (18mm)
- SM-11-051869-001** Retaining Ring (15mm) Sweep



- SM-11-053493-000** Key (8 X 7 X 45mm) Crank
- SM-11-053494-000** Key (5 X 5 X 32mm) Front Pulley
- SM-11-053495-000** Key (8 X 7 X 40mm) Sweep
- SM-11-053497-000** Key (8 X 7 X 32mm)
- SM-11-053501-000** Key (5 X 5 X 25mm) Upper Elevator Shaft
- SM-11-053503-000** Key (8 X 7 X 28mm) Chain Gear
- SM-11-053507-000** Key (8 X 7 X 30mm) Sprocket Shaft
- SM-11-053508-000** Key (6 X 6 X 20mm) Elevator
- SM-11-053511-000** Metric Key (M10 X 8 X 32mm) Table Gear

DISTRIBUTORS

ACE MITCHELL BOWLERS MART

3365 Cavalier Trail
Cuyahoga Falls, OH 44224
Contact: Jeff Mraz
E-Mail: jmraz@acemitchell.com
Phone: (800) 321-0309

ACE MITCHELL BOWLERS MART EAST

940 Grand Blvd.
Deerpark, NY 11729
Contact: Jeff Mraz
E-Mail: jmraz@acemitchell.com
Phone: (800) 262-2695

ACE MITCHELL NASHVILLE

7125 Cockrill Bend Blvd.
Nashville, TN 37209
Contact: Mitchell Caruthers
E-Mail: mcaruthers@acemitchell.com
Phone: (800) 251-3522

ACE MITCHELL FLORIDA

400 Central Park Drive
Sanford, FL 32771
Contact: Randy McMackin
E-Mail: rmcmackin@acemitchell.com
Phone: (800) 432-3482

BOBS' BUSINESS - MN

1981 Old West Main
Red Wing, MN 55066
Contact: Bob Rehder
E-Mail: bob@bobsbusiness.com
Phone: (651) 388-4742

BOBS' BUSINESS - IL

730 Thomas Drive
Bensenville, IL 60106
Contact: Bob Rehder
E-Mail: bob@bobsbusiness.com
Phone: (651) 388-4742

BOWLERS SUPPLY INC.

2187 Pennsylvania Ave.
York, PA 17404
Contact: Andy Brenneman
E-Mail: andy@bowlerssupply.com
Phone: (800) 632-1830

BUFFA DISTRIBUTION MONTREAL

6520 Rue Magloire
St. Leonard, QC H1P-1N8
Canada
Contact: Michel Martin
E-Mail: michel@buffabowling.com
Phone: (800) 263-4072

CLASSIC PRODUCTS - FT. WAYNE, IN

4617 Industrial Rd.
Fort Wayne, IN 46825-5205
Contact: Jimmy Land
E-Mail: jland@classicproducts.com
Phone: (800) 444-0123

CLASSIC PRODUCTS - GARLAND, TX

1035 Nicholson Rd
Garland, Tx 75042
Contact: Jimmy Land
E-Mail: jland@classicproducts.com
Phone: (800) 444-0123

CLASSIC PRODUCTS - LARGO, FL

7333 124th Avenue North
Largo, FL 33773
Contact: Jimmy Land
E-Mail: jland@classicproducts.com
Phone: (800) 444-0123

CLASSIC PRODUCTS - AUBURN, WA

4810 D Street Northwest - STE 104
Auburn, WA 98001
Contact: Jimmy Land
E-Mail: jland@classicproducts.com
Phone: (800) 444-0123

NEWELL'S BOWLING SUPPLY

25795 Jefferson Ave
Unit 140
Murrieta, CA. 92562
Contact: Joe Newell
E-Mail: newellbowl@aol.com
Phone: (800) 796-2200

SBI, SCHEMM BOWLING INC.

500 Interpane Lane
Deerfield, WI 53531
Contact: Tom Schemm
E-Mail: tom@schemm.com
Phone: (888) 724-2695



**STRIKE
MAKER**

**PINSETTER PARTS FOR
GS[®] MACHINES**

www.strike-maker.com/us

GS[®] IS A REGISTERED TRADEMARK OF BRUNSWICK BOWLING PRODUCTS, LLC



**STRIKE
MAKER**

PINSETTER PARTS FOR GS[®] MACHINES

GS[®] Pinsetter Series:
GS-10, 92, 96, 98 & GSX

www.strike-maker.com/us



www.kegel.net

Toll Free (US Only): 800 - 280 - BOWL (2695)

Fax: 863 - 734 - 0204

International: 863 - 734 - 0200

1951 Longleaf Boulevard
Lake Wales, FL 33859 USA